

Technical Datasheet

C08E TILE DRY VERGE



Product Details

The Kytun Tile Dry Verge System permanently secures tiles on gable ends and gives an attractive maintenance free finish to the roofline. The design helps protect the edge of roof tiles from the elements and eliminates the possibility of lifting and damage to the roof underlay. No mortar or timber guides are required. The components are manufactured from high grade powder coated Aluminium.

Product Features

- Provides full wind uplift and rain protection.
- Extremely easy and quick to install.
- Requires no maintenance once installed.
- Can be fully customised.
- Available in a range of colours:
Black, Blue/Black, Brown & White.
- Powder coated colours also available on request.

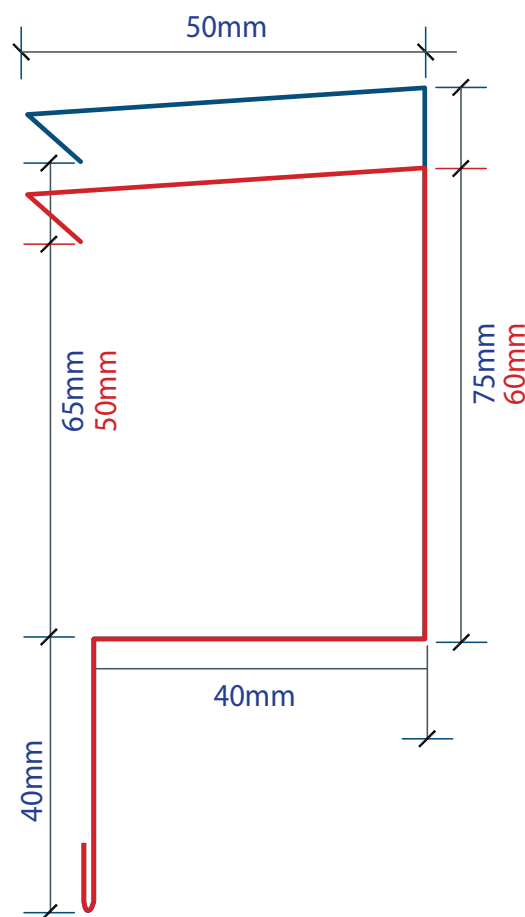
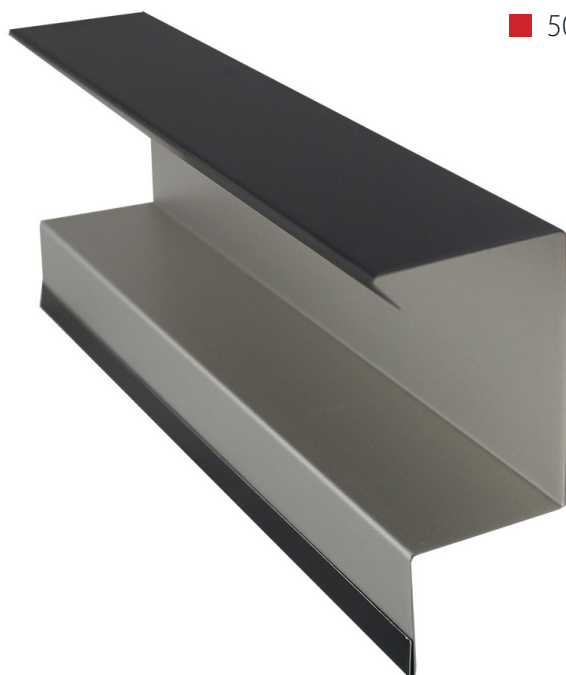
Compatibility

Fully compatible with most tiles on the market.
Suitable for brick, render & bargeboard construction.

Dimensions

C08E Tile Dry Verge System Aluminium
Overall length: 3050mm

- 65mm version
- 50mm version



The C08E range can be bespoke manufactured to accommodate all sizes and virtually any profile to suit individual requirements.